



NUMBER: B400R1103-0

DATE: NOV. 1, 1991

SUPERSEDES:

---

---

## SERVICE BULLETIN

---

---

Effective Serial Number: All Units

Ride: GIANT GONDOLA WHEEL Subject: Sweep Bolt Torque

Due to loads at the sweep pivot joints during set-up, tear-down, and operation of the GIANT GONDOLA WHEEL, Chance Rides, Inc. has become aware that it is possible for the bolts at these locations to become loose. If this occurs, the load is transmitted through the bolt rather than through the bushing. This will cause wear to the bolt which could result in failure and possible personal injury.

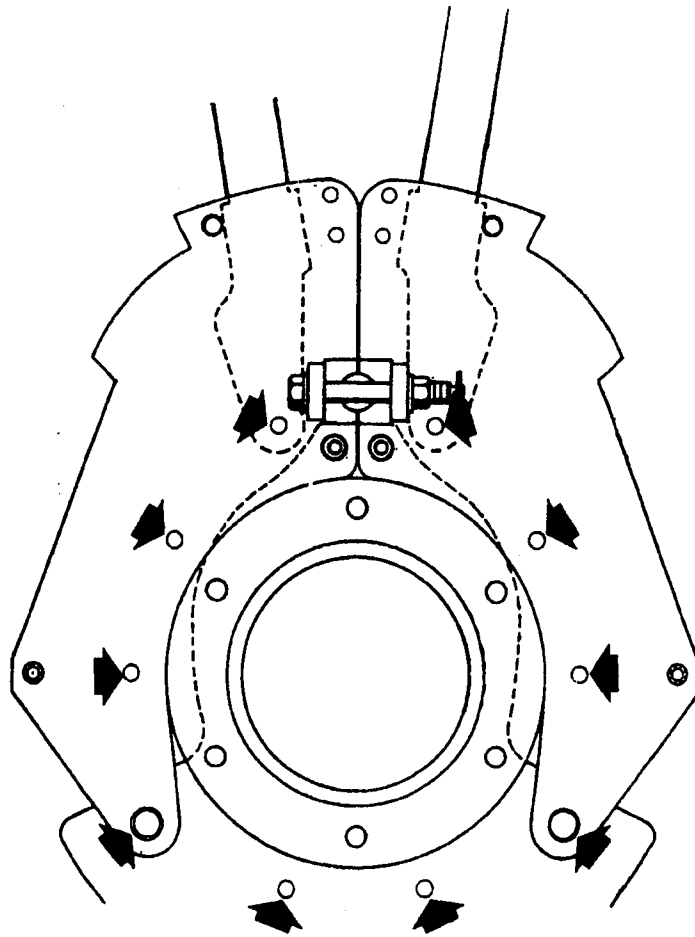
Chance Rides, Inc. requires all owner/operators of GIANT GONDOLA WHEEL amusement rides to check the torque of all sweep to axle assembly bolts at each set-up or once a month, whichever occurs first. Unit number 400-001-88 has 3/4" diameter coarse thread bolts. all other units have 1" diameter coarse thread bolts. REFER TO THE TORQUE CHART IN THE OWNER'S MANUAL FOR PROPER TORQUE FOR THE SPECIFIC BOLT USED.

All work must be performed by qualified personnel, capable of understanding the function of the parts and their proper installation.

### NOTICE

Use only those components authorized, specified or provided by Chance Rides, Inc.

Chance Rides, Inc. SPECIFICALLY DISCLAIMS ANY LIABILITY for losses associated with any unauthorized alterations and/or modifications or additions and installations of unauthorized components.



SWEEP PIVOT JOINTS  
(10 LOCATIONS AT EACH END OF THE AXLE ASSEMBLY)