



# WISDOM INDUSTRIES, Ltd.

## SAFETY BULLETIN

**DATE:** OCTOBER 18, 2004  
**RIDE:** SIZZLER AND DELUXE SIZZLER ONLY  
**SUBJECT:** SIZZLER SEAT FRAME AND FOOT TUB  
ATTACHMENT INSPECTION  
**TIME:** IMMEDIATE  
**FREQUENCY:** ANNUAL

❖ **WARNING: FAILURE TO PERFORM THIS INSPECTION CAN RESULT IN SERIOUS INJURY TO YOUR PASSENGERS.**

▪ **KEY INSPECTION POINTS OF THIS BULLETIN**

1. Inspect, grade & torque of the 4 internal frame bolts.
2. Inspect foottub hinge bolts for proper grade and all metal locknut installed.
3. Inspect internal frame welds.

❖ **INSPECTION PROCEDURE TO BE FOLLOWED IS ON ATTACHED PAGES AND DRAWING.**

❖ **NOTE: If replacement bolts are needed contact Wisdom Industries for replacement. If the bolts are purchased locally verify grade 5 bolts by the head marking (See drawing). Many hardware stores only sell grade 2 or 3 bolts. These bolts are unacceptable and dangerous.**

**THE INSPECTION OF THE SIZZLER RIGHT SIDE (SEAT LOCK SIDE) SEAT INTERNAL FRAME MOUNTING BOLTS.**

1. Remove the two ¼ inch bolts holding the seat lock brass to the side of the car.
2. Slide out the side quarter panel.
3. Inspect the two internal frame mounting bolts for proper Grade 5.

4. Replace if they are loose or broken and use Red Loctite.
5. Inspect bolts for proper 7/16 inch diameter. Check proper head size using a 5/8 inch socket.
6. Check that torque of 7/16 inch bolt is 60 foot pounds .

➤ **NOTE: IF BOLT IS LOOSE REMOVE THE BOLT CLEAN THREADS WITH WIRE BRUSH AND APPLY RED LOCKTITE. TORQUE BOLT TO 60 FOOT POUNDS.**

7. Verify that the foottub hinge nut is a 5/8 inch all metal lock nut.
  - **Warning NEVER reuse locknuts**
  - **Only use all metal locknuts on the hinge bolts.**
  - **Inspect hinge pipe welds for cracks.**

### **FOR INSPECTION OF THE LEFT SIDE (SPINDLE SIDE) SEAT IRON BOLTS.**

○ **IF THE INSPECTION HOLE IS NOT INSTALLED**

1. Remove seat liner to perform annual inspection.
2. Cut a hole in the left side of the car body using a hole saw. Review the enclosed drawing for the location of the hole. Use a 5 inch diameter hole saw.
3. Inspect the two internal frame mounting bolts for proper Grade 5.
4. Replace if they are loose or broken and use Red Loctite.
5. Inspect bolts for proper 7/16 inch diameter. Proper head size of a 7/16 inch bolt uses a 5/8 inch socket.
6. Check that torque of 7/16 inch bolt is 60 foot pounds.

➤ **NOTE: IF BOLT IS LOOSE REMOVE THE BOLT CLEAN THREADS WITH WIRE BRUSH AND APPLY RED LOCKTITE. TORQUE TO 60 FOOT POUNDS.**

6. Verify that the foottub hinge nut is a 5/8 inch all metal lock nut.
  - **Warning NEVER reuse locknuts**
  - **Only use all metal locknuts on the hinge bolts.**
  - **Inspect hinge pipe welds for cracks.**

### **REASSEMBLY**

**Reassemble fiberglass quarter panel and seat lock brass  
Perform lapbar inspection procedure on following page.**

## **SIZZLER**

### **LAP BAR & SEAT LOCK INSPECTION PROCEDURE**

1. Raise lap bar and latch.
2. Check lap bar hinge bolts and pipe for wear or looseness.
3. Check lap bar arm for cracks.
4. Check that seat lock brass is tight.
5. Open lap bar.
6. Push seat lock pin. It must snap back out and not drag or catch.
7. Close lap bar. Seat lock pin must snap into the notch in the brass.  
3/8 inch minimum engagement of pin in brass.

➤ **NOTE: ELECTRIC SEAT UNLOCKING IS NOT MANDATORY.**

8. Activate electric unlocking system.  
**NOTE:** All seat locks should release.
9. Turn off electric unlocking system.  
**NOTE:** The timer will shut off the solenoids after about 15 seconds.
10. Go around seat to inside (spindle side) and pull on the lap bar sideways and out to try to pop seat lock pin out of the brass.
11. If bar comes open, tie off that car until repairs are made. Replace any components needed if the bar will come open.
12. Repeat for each seat.

#### **\*\*WARNING\*\***

Never install a bolt or knob to manually unlock the lapbar. Passengers have been known to open the bar while the ride is running and come out of the seat.

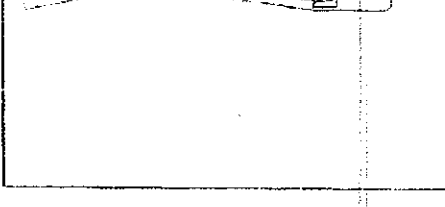
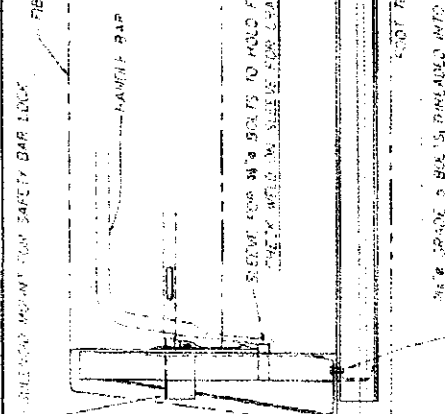
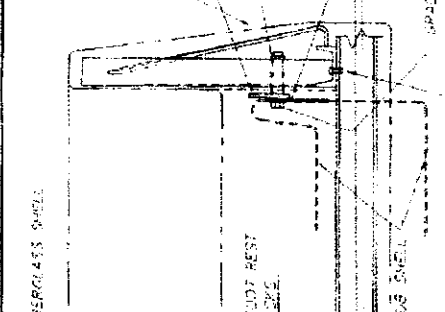
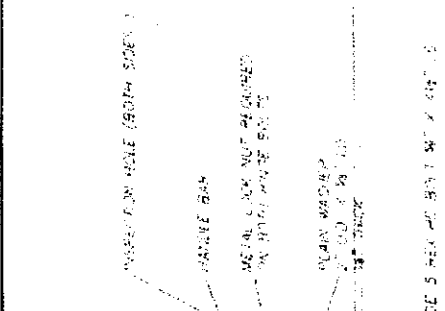
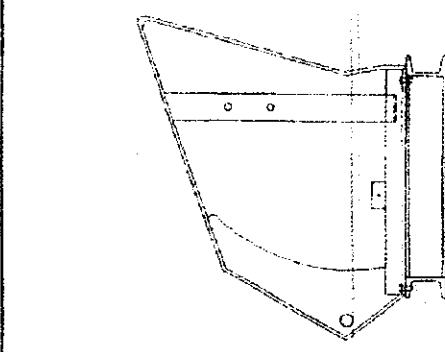
#### **\*\*NOTE\*\***

Each seat lock pin is custom drilled for each car and lap bar. Make sure the same pin goes back to the same bar on the same car.

**INSPECT CLEARANCE OF FOOTTUB TO SWEEP AND TRAILER GOOSENECK.**

**SEE ATTACHED BULLETIN.**

Please notify Wisdom Industries following this inspection and notify us to the status of the bolts on your ride. If you have any questions, please contact Wisdom Industries at 800-634-6097.



FIBERGLASS SHELL

FAVORITE BAR

INSERTION HOLE (BOTH SIDES)

FAVORITE BAR

METAL LOCK NOT REQUIRED ON THIS PART OF SEAT

NEAR WOODS 2" X 3" X 1/2" 18" LONG

GRADE 5 HEAD OF BOLT WT. 4.00" IS

NEAR WOODS 2" X 3" X 1/2" 18" LONG

NEAR WOODS 2" X 3" X 1/2" 18" LONG

GRADE 5 BOLT (TYPICAL 4 SHOWN)

1/4" GRADE 5 BOLT  
HEAD SIZE IS 3/4"  
TORQUE TO 75 FOOT POUNDS  
LOCKNUT MUST BE USED.

1/2" GRADE 5 BOLT  
W/LOCKNUT  
(TOP 2)

1/4" GRADE 5 BOLTS  
HEAD SIZE IS 3/4"  
TORQUE TO 75 FOOT POUNDS  
CHECK HEAD FOR GRADE 5 MARKINGS

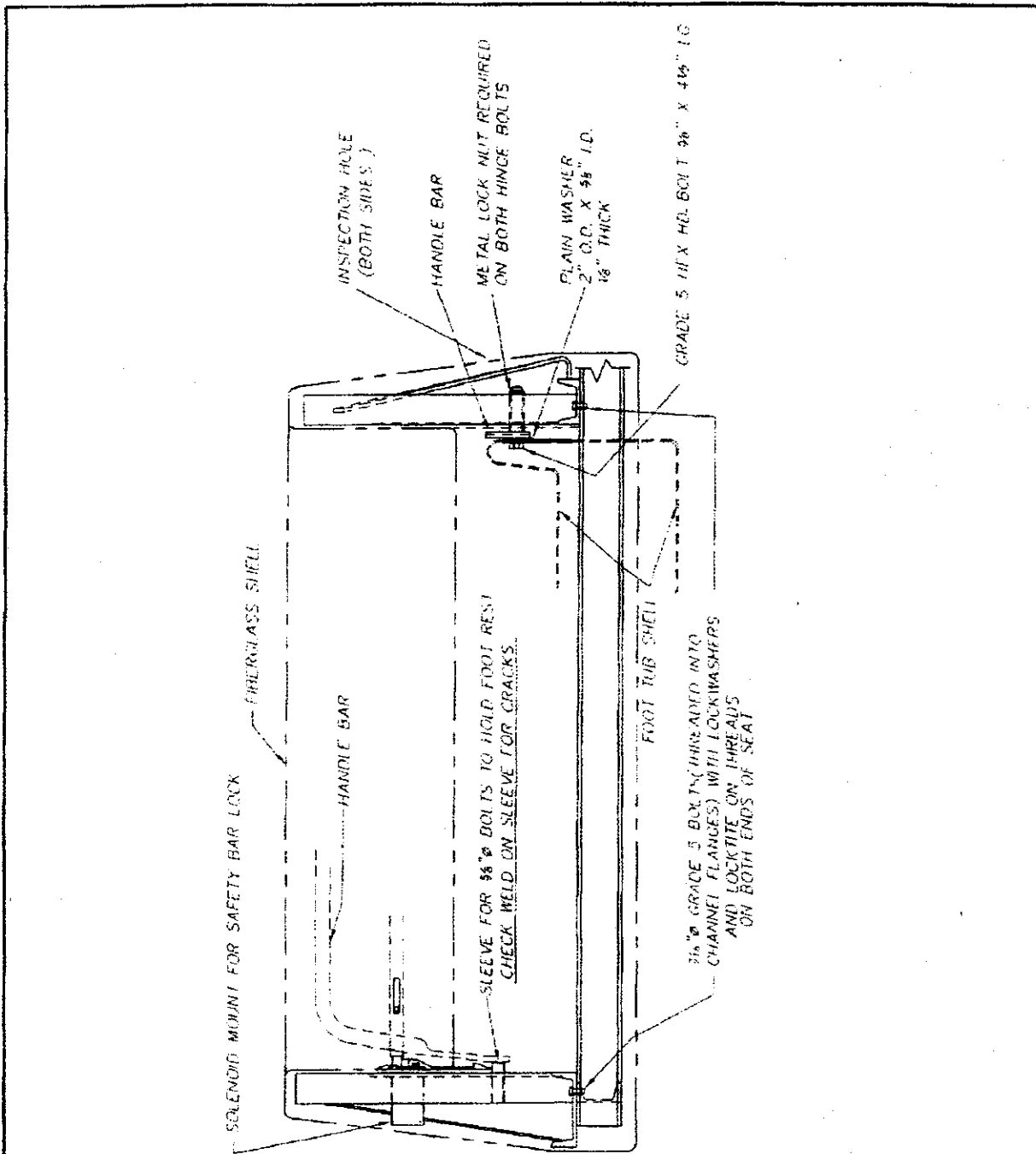
VIEW OF SIZZLER  
BOLT PATTERN

VIEW OF DELUXE SIZZLER  
BOLT PATTERN



WISDOM INDUSTRIES Merino, CO 80741	
SCALE 1/8" = 1'-0"	APPROVED BY
DATE 08/01/98	DESIGNED BY
PREPARED BY	REVIEWED
INSIDE CONSTRUCTION OF SEAT	
QUANTITY	ISSUE NUMBER
SIZZLER	11 573

10/14/98 10:14 AM C:\B22\BOLTPAT.DWG




**WISDOM INDUSTRIES** Merino, CO 80741

APPROVED BY

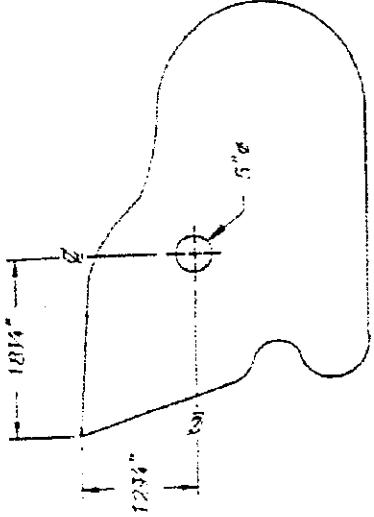
DESCRIPTION  
**SEAT INSPECTION GUIDE**

SCALE: NTS

EQUIPMENT  
**SIZZLER**

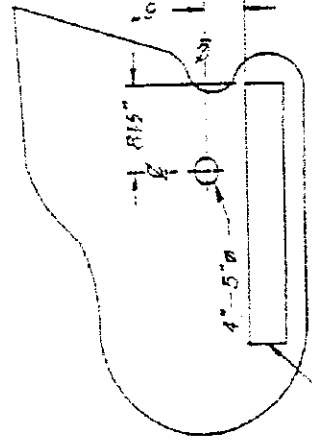
DRAWN BY  
**M HICKAM**

DRAWING NUMBER  
**01E198B**



RIGHT SIDE OF SEAT

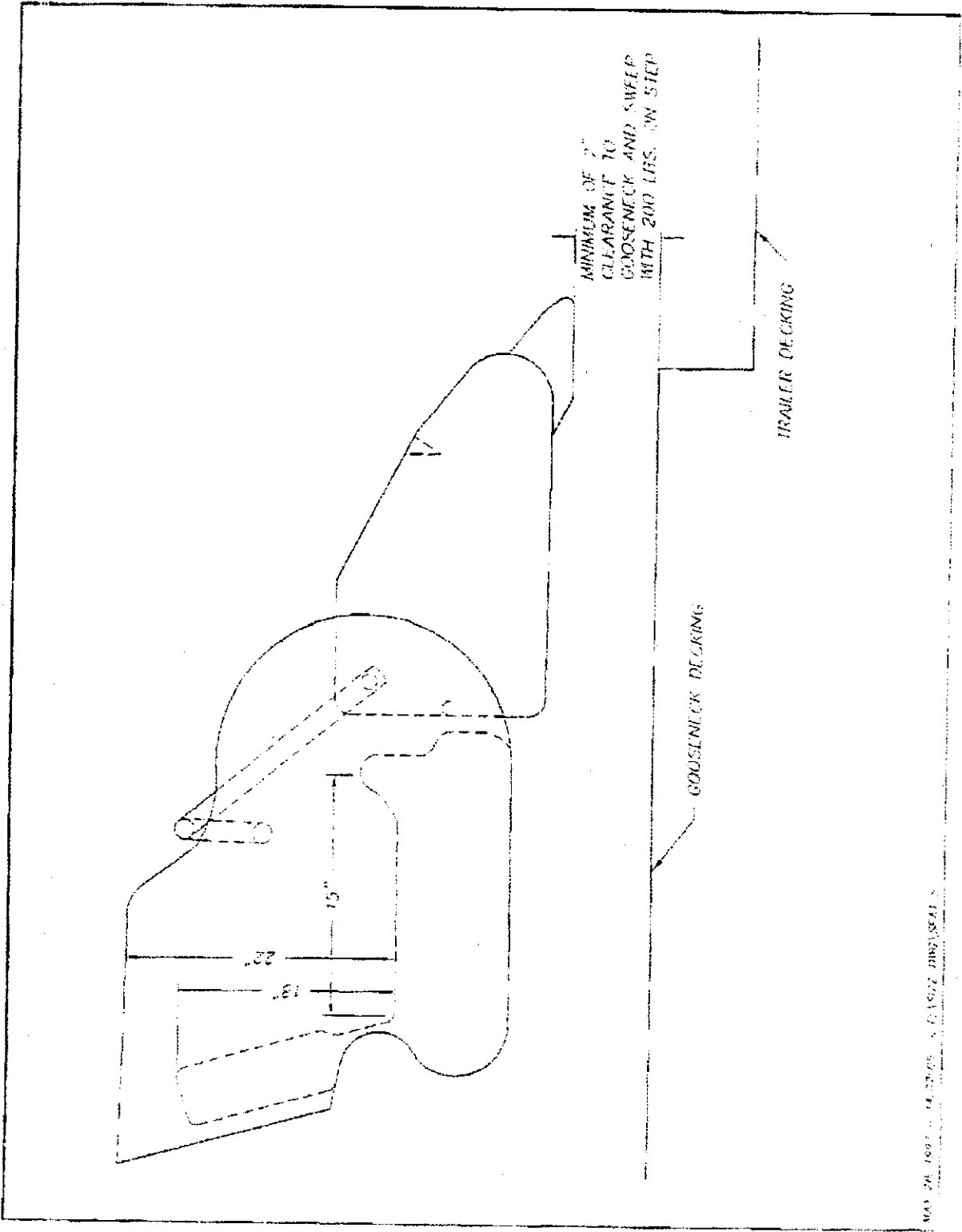
IF RIGHT SIDE INSPECTION HOLE IS DESIRED.  
 NOTE: 1 LEVEL TRAILER.  
 2 USE LEVEL FROM RACK CORNER OF SEAT  
 TO MARK CENTER LOCATION.



LEFT SIDE OF SEAT

SWEEP OUT OUT

		Merino, CO 80741	
SCALE: N.T.S.	APPROVED BY:	DRAWN BY: MFK	
DATE: 08-25-04		RE: SEEP	
TITLE: SEAT INSPECTION HOLE LOCATIONS			
FORMER: SUZZLER		DRAWING NUMBER: SEAT	



WISDOM LTD

18-12-2884